



**ALASKA DIVISION OF HOMELAND SECURITY &
EMERGENCY MANAGEMENT**
SITUATION REPORT 24-088 • March 28, 2024



Toll-Free 1.800.478.2337

Anchorage Area 907.428.7000

SEOC 907.428.7100

<p><u>SEOC Preparedness Level</u> Level 1 – Routine Operations.</p>	<p align="center">http://ready.alaska.gov</p>	<p><u>National Terrorism Advisory System:</u> Read the NTAS Bulletin here</p>
<p><u>Maritime Security (MARSEC)</u> Level:1- Minimum Appropriate Security Measures</p>	<p>WHO Novel Coronavirus Pandemic (COVID-19): 2019 Novel Coronavirus</p>	<p><u>Alaska Military Installation Force Protection Level:</u> FPCON Bravo</p>

(Significant changes from previous situation reports are red.)

Significant Issues:

Tsunami Warning Test

SEOC in partnership with the National Tsunami Warning center conducted the annual Tsunami Warning Drill yesterday. A live tsunami test code was sent out as part of the drill to ensure messaging channels were functional. DHSEM staff was recalled to the SEOC to activate the tsunami warning response procedure to include contacting communities via landline phone and the Alaska Warning Alert System (AKWAS) phone to ensure the message was received and verify community phone numbers and points of contact.

State of Alaska Department of Health (DOH)

The DOH stands ready to assist with all aspects of public health and, in the event of a public health emergency, is supported by the SEOC and other state departments as required.

For current information, see: <https://health.alaska.gov/dph/Pages/default.aspx>
<https://health.alaska.gov/dph/Emergency/Pages/prepared/default.aspx>

NTAS Bulletin

The U.S. Department of Homeland Security issued an updated National Terrorism Advisory Bulletin on May 24, 2023. The current and expired bulletins can be viewed at the below link.

<https://www.dhs.gov/national-terrorism-advisory-system>

Travel Alerts and Conditions

For current driving conditions, dial 511 or visit: <https://511.alaska.gov/>

Barry Arm Landslide / Tsunami Risk

For the latest information on the Barry Arm Landslide and Tsunami risk, click here:

<https://dggs.alaska.gov/hazards/barry-arm-landslide.html>

Earthquakes

United States Geological Service (USGS) Earthquake Information: <http://earthquake.usgs.gov/>
National Tsunami Warning Center: <http://tsunami.gov/>

Alaska Volcanoes

Great Sitkin Alert Level: Watch and Aviation Color Code: **Orange**

Shishaldin Alert Level: Advisory and Aviation Color Code: **Yellow**

Atka Volcanic Complex Alert Level: Advisory and Aviation Color Code: **Yellow**

For Alaska Volcano updates, go to: <https://www.avo.alaska.edu/>

Air Quality Index (AQI) Advisories

For the most up-to-date Air Quality Index Advisories:
<http://dec.alaska.gov/Applications/Air/airtoolsweb/Home/Index>

Spills of Oil and Hazardous Substances

The Alaska Division of Environmental Conservation (ADEC) Spill Prevention and Response page is located at:

<https://dec.alaska.gov/spar/>

Alaska Cyber Security Information

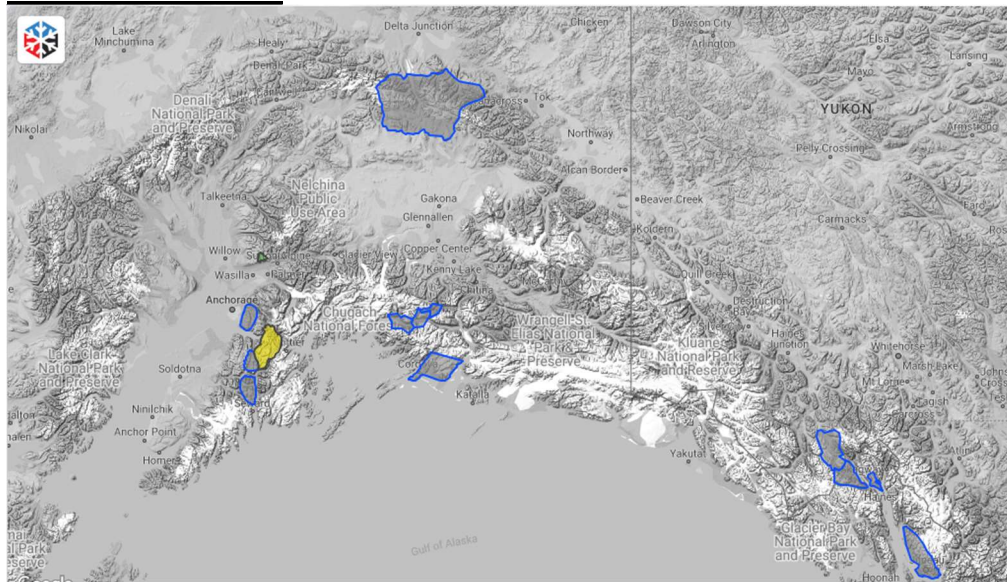
State Employees may sign up for cybersecurity notifications and alerts at

<https://oit.alaska.gov/security>

Cybersecurity and Infrastructure Security Agency (CISA)-Cybersecurity Services and Tools:

www.cisa.gov/free-cybersecurity-services-and-tools

Avalanche Hazard



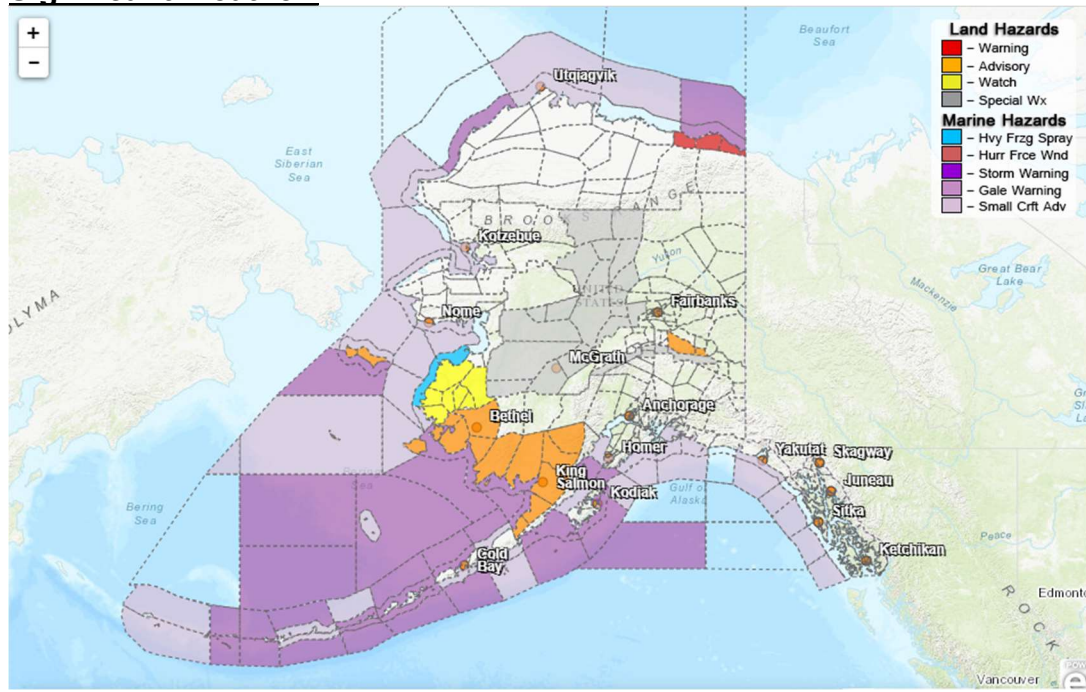
Travel in avalanche terrain is not recommended. Avoid being on or beneath all steep slopes.

Turnagain Pass- Moderate at all elevations

Hatcher Pass – Low at all elevations.

For information and the most current avalanche conditions, go to <https://alaskasnow.org>

Significant Weather:



Special Weather Statement

- **South Slopes of The Central Brooks Range, Upper Koyukuk Valley, Dalton Highway Summits, Central Interior** - heavy snow looking more likely.
- **Southern Denali Borough and Eastern Alaska Range South of Trims** - heavy snow expected.
- **Middle Yukon Valley; Lower Yukon and Innoko Valleys; Upper Kuskokwim Valley** – heavy snow likely.

Blizzard Warning

- **Eastern Beaufort Sea Coast** - until 10am this morning.

Wind Advisory

- **Eastern Alaska Range North of Trims** – in effect from 10 AM Friday to 4 PM AKDT Saturday.

Winter Weather Advisory

- **St Lawrence Island** - remains in effect until 10 PM AKDT this evening.
- **Pribilof Islands** – in effect from 10 AM this morning until 10 AM AKDT Friday.
- **Kuskokwim Delta** – in effect from 4 PM this afternoon to 1 PM AKDT Friday for the Kuskokwim Delta Coast.
- **Bristol Bay** - in effect from 7 PM this evening until 4 PM AKDT Friday for the Northern Bristol Bay Coast.

Winter Storm Watch

- **Yukon Delta Coast; Lower Yukon River** – in effect from late tonight through Friday evening.

For more information and the most current weather, Watches / Warnings / Advisories go to:

<https://www.weather.gov/arh/>

The Next Situation Report will be **March 29, 2024**. A significant change in the situation or the threat level will prompt an interim report. This report is posted on the internet at <https://ready.alaska.gov/sitrep>.

To register for email distribution, go to <http://list.state.ak.us/mailman/listinfo/dhsem.situation.report>. Direct questions regarding this report to the SEOC at 907-428-7100 or seoc@alaska.gov.